

Product-Datasheet KFL-B

Spheroidal cast iron- flanged ball valve– long face-to-face length



von Scheven

Armaturenfabrik und Apparatebau

E	V40
	005
	state 09/10

Rudolf von Scheven GmbH
Wuppertaler Str. 10-12 45549 Sprockhövel
www.von-scheven.com

Tel. + 49 (0)23 24 / 97 42 - 0
Fax + 49 (0)23 24 / 97 42 - 10
eMail sales@von-scheven.com

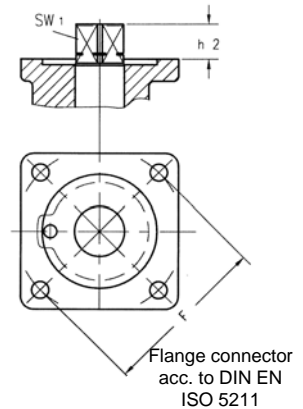
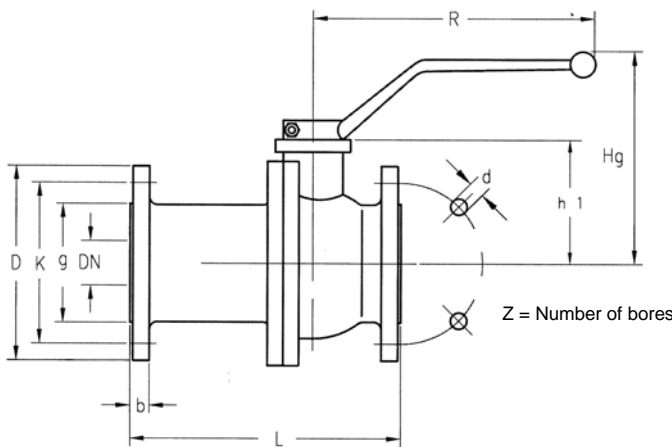
Spheroidal cast iron – flanged ball valve
DN 25 - 200
PN 10/16 bar



Face-to-face length
KFL - EN 558-1 serie G1

type serie
25 - PN10 acc. to DIN EN 1092-1
26 - PN16 acc. to DIN EN 1092-1

approvals:
DVGW for Gas nominal diameter : DN25 up to DN200 max. 16 bar
TA-Luft



Technical data type series 25 (PN10 up to DIN EN 1092-1)																
DN	PN	L	D	g	K	b	z	d	Hg	R	h1	h2	F	SW1	weight (kg)	
25 -150	10	use ball valves acc. to type series 26 (PN16) verwenden														
200	10	600	340	268	295	24	8	22	260	700	231	28	F12	27	108	

Technical data type series 26 (PN16 up to DIN EN 1092-1)																
DN	PN	L	D	g	K	b	z	d	Hg	R	h1	h2	F	SW1	weight (kg)	
25	16	160	115	68	85	16	4	14	83	160	---	---	---	10	4,5	
32	16	180	140	78	100	18	4	18	117	250	60	18	F07	17	8,0	
40	16	200	150	88	110	18	4	18	121	250	64	18	F07	17	9,0	
50	16	230	165	102	125	20	4	18	128	250	71	18	F07	17	13,0	
65	16	290	185	122	145	20	4	18	158	250	101	18	F07	17	20,5	
80	16	310	200	138	160	22	8	18	182	368	131	22	F10	22	29,5	
100	16	350	220	158	180	24	8	18	194	358	144	22	F10	22	36,0	
125	16	400	250	188	210	26	8	18	195	500	153	22	F10	22	50,0	
150	16	480	285	212	240	26	8	22	225	700	194	28	F12	27	72,0	
200	16	600	340	268	295	30	12	22	260	700	231	28	F12	27	108	

Ordering example: ball valve Type KFL-B DN100 with flange PN16 acc. to DIN EN 1092-1 (type series 26)
⇒ KFL-B 100 26

Product-Datasheet KFL-B

Spheroidal cast iron- flanged ball valve– long face-to-face length



von Scheven

Armaturenfabrik und Apparatebau

E	V40
	005
	state 09/10

Rudolf von Scheven GmbH
Wuppertaler Str. 10-12 45549 Sprockhövel
www.von-scheven.com

Tel. + 49 (0)23 24 / 97 42 - 0
Fax + 49 (0)23 24 / 97 42 - 10
eMail sales@von-scheven.com

Spheroidal cast iron – flanged ball valve

DN 25 - 200
PN 10/16 bar



Technische Beschreibung

The ball valve KFL-B consists of a 2-piece body. Up to DN 100 the flange is screwed into the body. From DN125 and above, two parts are flanged together. The spindle has an anti-blow-out design and from DN20 and above, it has a double-o-ring seal.

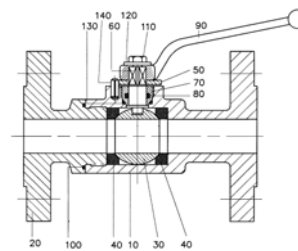
Application area:

For non-aggressive fluids and gases. Furthermore, the resistiveness against the flow medium generally has to be given

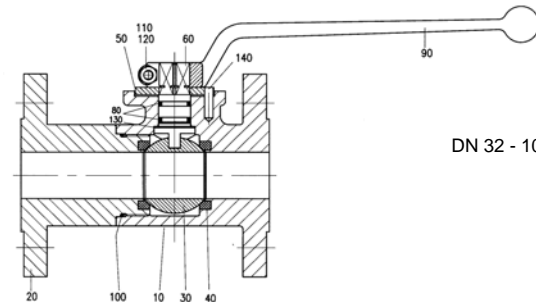
Allowed operating temperature: -10 °C up to +90 °C

Differing temperatures on request.

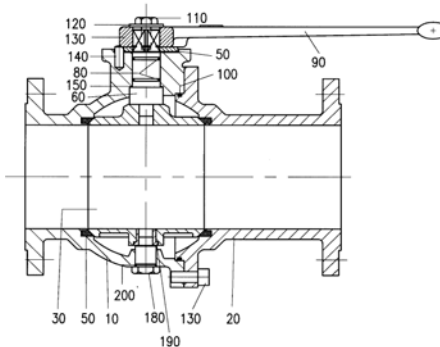
Bill of materials			
Pos.	name	material	Wnr./DIN
10	body	EN-GJS-400-15	0.7040
20	flange	EN-GJS-400-15	0.7040
30	ball	CuZn39Pb3 GJL250	2.0401 ---
40	seal	PTFE	
50	stop washer	steel	
60	spindle	CuZn39Pb3 11SMn30	2.0401 1.0715
70	fitting	CuZn39Pb3	2.0401
80	o-ring	NBR	---
90	hand-lever	Z410 AlMgSi1F31 GTW	
100	o-ring	NBR	---
110	screw		DIN EN ISO 2-4017
120	nut		DIN EN ISO 4032
130	washer		DIN EN ISO 7093
130	o-ring	NBR	---
140	stop pin		DIN EN ISO 8740
150	sliding ring	PTFE	
160	screw		DIN EN ISO 4762
180	stud	steel	
190	bearing bush	CuZn39Pb3	2.0401
200	o-ringh	NBR	



DN 25



DN 32 - 100



DN 125 - 200

Depending on the design, not all positions are used with every nominal diameter. In special types, several parts may be made of different materials.

If you have other demands, different from the here specified standard operational conditions, please feel free to request them separately.

The operating and maintenance manual and in particular the safety instructions have to be followed. They can be downloaded from www.von-scheven.com, as well as certificates and approvals.

All dimensions in mm.
Technical changes reserved.