

Product-datasheet KFK-B

spheroidal cast iron-flanged ball-valve – short face-to-face length

E	V40
	002
	State 01/09

Rudolf von Scheven GmbH
Wuppertaler Str. 10-12, 45549 Sprockhövel
www.von-scheven.com

Tel. + 49 (0)23 24 / 97 42 - 0
Fax + 49 (0)23 24 / 97 42 - 10
eMail sales@von-scheven.com



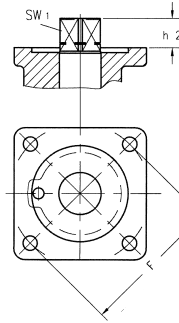
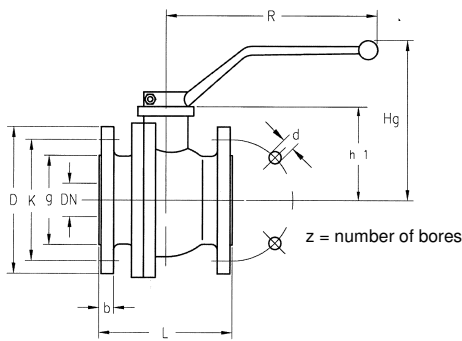
**spheroidal cast iron
- flanged ball-valve**
DN 32 - 250
PN 10/16 bar



Face-to-face length
KFK - EN 558-1 serie G27

Type series
25 - PN10 acc. to DIN EN 1092-1
26 - PN16 acc. to DIN EN 1092-1

Approvals:
TUV - type-test-approval mark
DVGW for gas: DN32 bis DN250 max 16 bar
TB (DN 32 – 150)
TA-Luft



Flange connector acc. to
DIN EN ISO 5211

Technical data type series 25 (PN10 acc. to DIN EN 1092-1)

DN	PN	L	D	g	K	b	z	d	Hg	R	h1	h2	F	SW1	Weight (kg)
32 -150	10	use ball valves acc. to type series 26 (PN16)													
200	10	400	340	268	295	24	8	22	260	700	194	28	F12	27	108
250 *)	10	450	395	320	350	32	12	22	260	700	231	28	F12	27	135

*) = LW 200 – reduced bore

Ordering example: ball valve type KFK-B DN100 with flange connector PN16 acc. to DIN EN 1092-1 (type series 26)

Technical data type series 26 (PN16 acc. to DIN EN 1092-1)

DN	PN	L	D	g	K	b	z	d	Hg	R	h1	h2	F	SW1	Weight (kg)
32	16	130	140	78	100	18	4	18	117	250	60	18	F07	17	8,0
40	16	140	150	88	110	18	4	18	121	250	64	18	F07	17	9,0
50	16	150	165	102	125	20	4	18	128	250	71	18	F07	17	13,0
65	16	170	185	122	145	20	4	18	158	250	101	18	F07	17	20,5
80	16	180	200	138	160	22	8	18	182	368	131	22	F10	22	29,5
100	16	190	220	158	180	24	8	18	194	358	144	22	F10	22	36,0
125	16	325	250	188	210	26	8	18	195	500	163	22	F10	22	50,0
150	16	350	285	212	240	26	8	22	225	700	194	28	F12	27	72,0
200	16	400	340	268	295	30	12	22	260	700	231	28	F12	27	108
250 *)	16	450	405	320	355	32	12	22	260	700	231	28	F12	27	135

*) = LW 200 – reduced bore

Ordering example: ball valve type KFK--B DN100 with flange connector PN16 acc. to DIN EN 1092-1
⇒ KFK-B 100 26

Product-datasheet KFK-B

spheroidal cast iron-flanged ball-valve – short face-to-face length



von Scheven

Armaturenfabrik und Apparatebau

E	V40
	002
	State 01/09

Rudolf von Scheven GmbH
Wuppertaler Str. 10-12, 45549 Sprockhövel
www.von-scheven.com

Tel. + 49 (0)23 24 / 97 42 - 0
Fax + 49 (0)23 24 / 97 42 - 10
eMail sales@von-scheven.com

spheroidal cast iron-flanged ball-valve

DN 32 - 250
PN 10/16 bar



Technical description

The ball valve type KFK-B consists of a 2-parted body. Up to DN 100 one flange part is screwed into a body part. From DN125, both body parts are flanged.

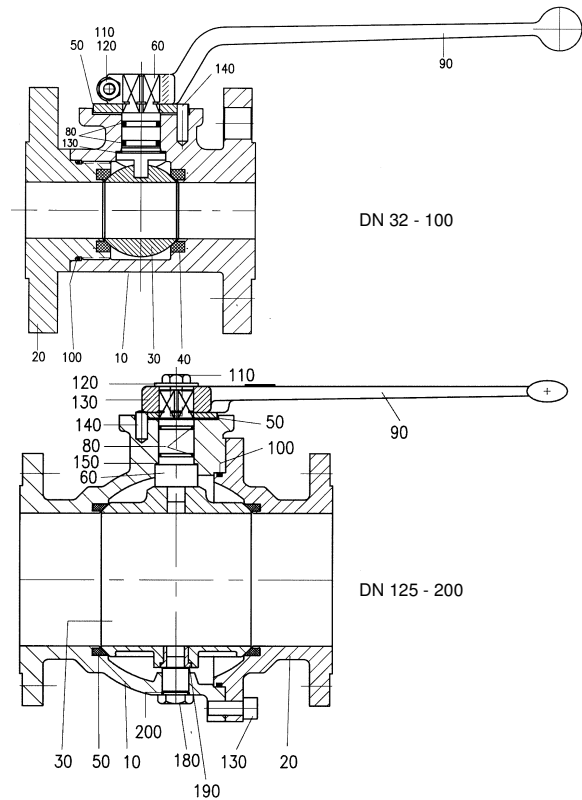
The spindle has an anti-blowout design and has a double O-ring-sealing from DN32.

Application area:

For non-aggressive fluids and gases. Furthermore, the resistiveness against the flow medium generally has to be given.

Allowed operating temperature: -10 °C up to +160 °C
Differing temperatures on request.

Bill of materials			
Pos.	Name	Material	Wnr./DIN
10	Body	GJS-400-15	0.7040
20	Flange	GJS-400-15	0.7040
30	Ball	CuZn39Pb3 GJL-250	2.0401 ---
40	Seal	PTFE	
50	Stop washer	Stahl	
60	Spindle	CuZn39Pb3 11SMn30	2.0401 1.0715
80	O-Ring	FPM	---
90	Hand lever	Z410 AlMgSi1F31 GTW	
100	O-Ring	FPM	---
110	Screw		DIN EN ISO 2-4017
120	Nut		DIN EN ISO 4032
	Washer		DIN EN ISO 7093
130	O-Ring	FPM	---
140	Stop pin		DIN EN ISO 8740
150	Sliding ring	PTFE	
160	Screw		DIN EN ISO 4762
180	Stead	Stahl	
190	Bushing bear	CuZn39Pb3	2.0401
200	O-Ring	FPM	



Depending on the design, not all positions are used with every nominal diameter. In special types, several parts may be made of different materials.

If you have other demands, different from the here specified standard operational conditions, please feel free to request them separately.

The operating and maintenance manual and in particular the safety instructions have to be followed. They can be downloaded from www.von-scheven.com, as well as certificates and approvals.

All dimensions in mm.
Technical changes reserved.