

Product-Datasheet VSK-C

Ball valve with weld-on ends, full welded



von Scheven

Armaturenfabrik und Apparatebau

E	V30
	004
	State 07/09

Rudolf von Scheven GmbH
Wuppertaler Str. 10-12, 45549 Sprockhövel
www.von-scheven.com

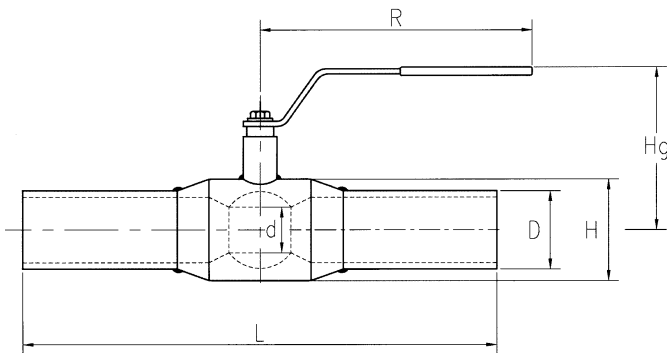
Tel. + 49 (0)23 24 / 97 42 - 0
Fax + 49 (0)23 24 / 97 42 - 10
eMail sales@von-scheven.com

**Ball valve with
weld-on ends,
full welded**
DN 10 -300
PN max. 40 bar



Type series

40 – with weld-on ends, full welded



Technical Datas

DN	PN	d	D	H	Hg	R	L	weight kg
10	40	10	17,2	33,7	98	145	230	0,5
15	40	10	21,3	33,7	98	145	230	0,5
20	40	15	26,9	42,4	103	145	230	0,7
25	40	20	33,7	48,3	118	145	230	1,0
32	40	25	42,4	60,3	121	145	260	1,4
40	40	32	48,3	70,0	120	190	260	1,8
50	40	40	60,3	88,9	127	190	300	2,6
65	25	50	76,1	101,6	159	280	300	4,4
80	25	65	88,9	121,0	171	280	300	5,6
100	25	80	114,3	146,0	218	280	325	8,4
125	25	100	139,7	177,8	252	400	325	13,4
150	25	125	168,3	219,1	272	600	350	18,0
200	25	150	219,1	273	300	900	390	36,3
250	25	200	273,0	355,6	345	1200	520	72,0
300	25	250	323,9	457,0	-	-	530	107,0

Ordering example:

Ball valve type VSK DN25 with weld-on ends, full welded, steel
⇒ VSK-C 25 40

Product-Datasheet VSK-C

Ball valve with weld-on ends, full welded



von Scheven

Armaturenfabrik und Apparatebau

E	V30
	004
	State 07/09

Rudolf von Scheven GmbH
Wuppertaler Str. 10-12, 45549 Sprockhövel
www.von-scheven.com

Tel. + 49 (0)23 24 / 97 42 - 0
Fax + 49 (0)23 24 / 97 42 - 10
eMail sales@von-scheven.com

Ball valve with weld-on ends, full welded

DN 10 -300
PN max. 40 bar



Technical description

The valve has an all-welded body. The valve body, end pieces and valve neck are welded together to form a single unit and the blow-out proof stem is sealed by means of two O-Rings. The upper one can be changed up to DN 50. From DN65 up to DN250, both O-Rings can be changed. Because of this a lifelong easy handling is secured. The stainless steel ball in combination with the graphite forced PTFE-seat ring secures a low torque and leak tightness also on low differential pressure.

Features

The ball valve is maintenance free. One-piece welded design with no body joints to leak. Double stem seals to avoid stem leakage. Low Lifetime cost due to long life, high leak-tight integrity and low initial cost. Stainless steel ball and stem. Easy operating due to low friction components. Easy to actuate By using easy-to-mount ISO-Flanges, electric- und pneumastic actuators can easily be refitted.

Allowed operating temperature:

Operating pressure depends on operating temperature

PN16 = -40 °C up to +165 °C

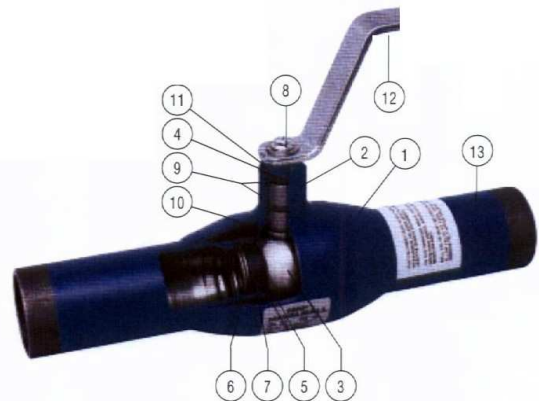
PN25 = -40 °C up to +140 °C

PN40 = -40 °C up to +90 °C

Other temperatures on request.

For non-aggressive fluids and gases.

Bill of materials			
Pos.	Name	Material	
1	Body	Steel	St 37.8
2	Connector	Steel St52-3	Fe 52 EP
3	Ball	Stainless steel	AISI 304
4	Spindle	Stainless steel	AISI 303
5	Seat ring	Graphite forced	PTFE-C
6	Spring ring	Steel ck 75	
7	Support ring	Stainless steel	
8	Screw	Steel	
9	O-Ring	Viton	FPM
10	Sliding ring	Graphite forced	PTFE
11	Stop pin	Stainless steel	AISI 304
12	Lever	Zincked steel	St 37-2
13	End fitting	steel	St 37.8



If you have other demands, different from the here specified standard operational conditions, please feel free to request them separately.

The operating and maintenance manual and in particular the safety instructions have to be followed. They can be downloaded from www.von-scheven.com, as well as certificates and approvals.

All dimensions in mm.
Technical changes reserved