

Product-Datasheet SEF-C

ball valve with fixed weld-on end and cover
as special drain valve



von Scheven

Armaturenfabrik und Apparatebau

E	V06
	001
	state 08/06

Rudolf von Scheven GmbH
Wuppertaler Str. 10-12 45549 Sprockhövel
www.von-scheven.com

Tel. + 49 (0)23 24 / 97 42 - 0
Fax + 49 (0)23 24 / 97 42 - 10
eMail sales@von-scheven.com

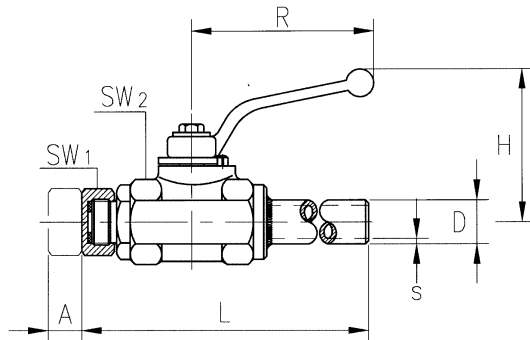
ball valve with fixed
weld-on end a. cover as
special drain valve

DN 8 - 50
PN max. 40 bar



type serie

92 – with fixed weld-on end and cover as special drain valve



Technical data											
DN	PN	cover	D	s	L	Hg	R	A	SW1	SW2	weight (kg)
8	40	G3/8	12,2	2,6	267	77	112	10	19	32	0,6
10	40	G1/2	17,2	2,6	267	77	112	12	23	32	0,7
16	40	G3/4	21,3	2,6	283	67	130	14,5	29	46	1,0
20	40	G1	26,9	3,2	293	71	130	15	36	46	1,5
25	40	G1 1/4	33,7	3,2	310	82	160	12,5	44	55	2,2
32	40	G1 1/4	42,4	3,2	310	82	160	12,5	44	55	3,5
40	40	G2	48,3	3,2	350	121	250	21	65	Ø90	4,5
50	40	G2	60,3	3,2	350	121	250	21	65	Ø90	6,3

Ordering example: ball valve Type SEF-C steel, DN25 with fixed weld-on end a. cover as special drain valve
⇒ SEF-C 20 92

Product-Datasheet SEF-C

ball valve with fixed weld-on end and cover
as special drain valve



von Scheven

Armaturenfabrik und Apparatebau

E	V06
	001
	state 08/06

Rudolf von Scheven GmbH
Wuppertaler Str. 10-12 45549 Sprockhövel
www.von-scheven.com

Tel. + 49 (0)23 24 / 97 42 - 0
Fax + 49 (0)23 24 / 97 42 - 10
eMail sales@von-scheven.com

Ball valve with fixed weld-on end and cover as special drain valve

DN 8 - 50
PN max. 40 bar



Technical description

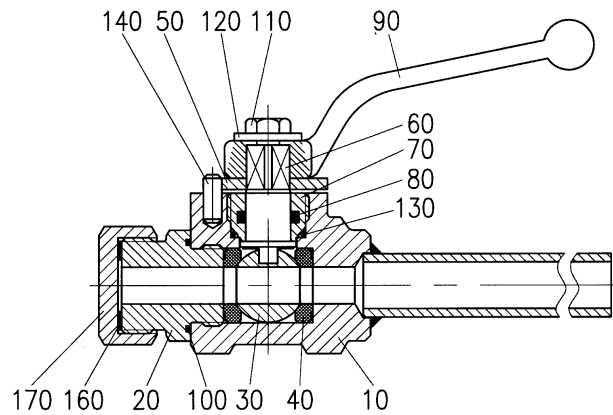
The special drain valve SEF-C offers of a fixed weld-on end and a male thread with end cap and flat seal.
The spindle sealing is maintenance free.

Application area

For non-aggressive fluids and gases. Furthermore, the resistiveness against the flow medium generally has to be given.

Allowed operating temperature: -20 °C up to +150 °C
Differing temperatures on request.

Bill of materials			
Pos.	name	material	Wnr./DIN
10	body	P250GH	1.0460
20	thread	11SMn30	1.0715
30	ball	CuZn39Pb3	2.0401
40	seal	PTFE	
50	sop washer	steel	
60	spindel	CuZn39Pb3	2.0401
70	fitting	CuZn39Pb3	2.0401
80	o-ring	EPDM	
90	hand-lever	Z410	
100	o-ring	EPDM	
110	screw		DIN EN ISO 2.4017
120	washer		DIN EN ISO 7093
130	o-ring	EPDM	
140	stop pin		DIN EN ISO 8740
160	seal ring	PTFE	
170	cover		



Depending on the design, not all positions are used with every nominal diameter. In special types, several parts may be made of different materials.

If you have other demands, different from the here specified standard operational conditions, please feel free to request them separately.

The operating and maintenance manual and in particular the safety instructions have to be followed. They can be downloaded from www.von-scheven.com, as well as certificates and approvals.

All dimensions in mm.

Technical changes reserved