

# Product-Dataheet HBI-C

High-Pressure-block-ball valve with female thread



**von Scheven**

Armaturenfabrik und Apparatebau

<b>E</b>	V00
	004
	state 08/06

**Rudolf von Scheven GmbH**  
Wuppertaler Str. 10-12 45549 Sprockhövel  
www.von-scheven.com

Tel. + 49 (0)23 24 / 97 42 - 0  
Fax + 49 (0)23 24 / 97 42 - 10  
eMail sales@von-scheven.com

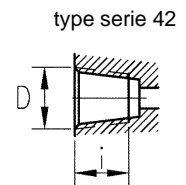
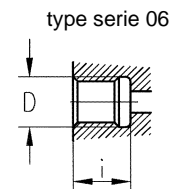
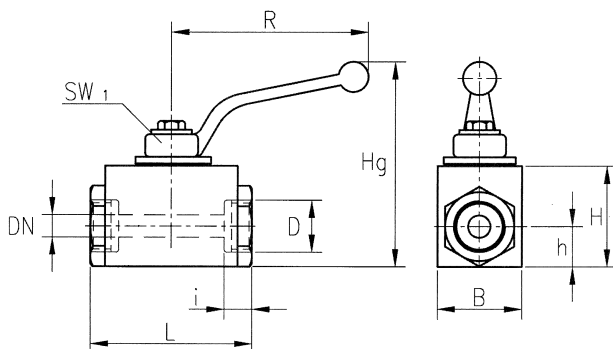
## Block-ball valve steel

DN 4 - 40  
PN 64 - 500 bar



**face-to-face length**  
HBI – DIN 3202 Serie M3

**type series**  
06 – female thread on both sides acc. to DIN ISO 228 / 1  
42 - NPT- female thread acc. to ANSI / ASME B1.20.1



### Technical data type series 06 (female thread on both sides acc. to DIN ISO 228 / 1)

DN	PN	D	i	L	B	H	h	Hg	R	SW1	weight (kg)
4	500	G 1/8	11	50	25	30	12,5	61	76	7	0,3
6	500	G 1/4	12,5	50	25	30	12,5	61	76	7	0,3
10	500	G 3/8	12,5	60	30	40	15	92	112	10	0,5
15	500	G 1/2	16	75	40	50	21	90	130	10	1,0
20	315	G 3/4	18	80	45	55	25	95	130	10	1,2
25	315	G 1	20	90	55	65	31	113	160	10	2,1
32*	315	G 1 1/4	22	136 **	55	65	31	113	160	10	2,1
40*	315	G 1 1/2	23	138 **	55	65	31	113	160	10	2,1

\* reduced bore 24mm

\*\* face-to-face length differs from M3; please request special face-to-face length if demanded

### Technical data type series 42 (NPT- female thread acc. to ANSI / ASME B1.20.1)

DN	PN	D	i	L	B	H	h	Hg	R	SW1	weight (kg)
4	500	NPT 1/8	11	50	25	30	12,5	61	76	7	0,3
6	500	NPT 1/4	12,5	50	25	30	12,5	61	76	7	0,3
10	500	NPT 3/8	12,5	60	30	40	15	92	112	10	0,5
15	500	NPT 1/2	15	75	40	50	21	90	130	10	1,0
20	315	NPT 3/4	18	80	45	55	25	95	130	10	1,2
25	315	NPT 1	20	90	55	65	31	113	160	10	2,1
32*	315	NPT 1 1/4	22	136 **	55	65	31	113	160	10	2,1
40*	315	NPT 1 1/2	23	138 **	55	65	31	113	160	10	2,1

\* reduced bore 24mm

\*\* face-to-face length differs from M3; please request special face-to-face length if demanded

Order example: ball valve Type HBI-C DN15 steel with female thread acc. to ISO 228/1 (type series 06)  
⇒ HBI-C 15 06

# Product-Dataheet HBI-C

## High-Pressure-block-ball valve with female thread



**von Scheven**

Armaturenfabrik und Apparatebau

E	V00
	004
	state 08/06

**Rudolf von Scheven GmbH**  
Wuppertaler Str. 10-12 45549 Sprockhövel  
www.von-scheven.com

**Tel.** + 49 (0)23 24 / 97 42 - 0  
**Fax** + 49 (0)23 24 / 97 42 - 10  
**eMail** sales@von-scheven.com

### Block-ball valve steel

DN 4 - 40  
PN 64 – 500 bar



#### technical description

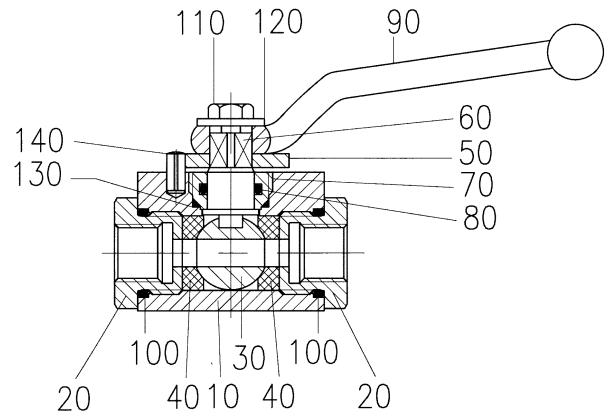
The ball valve type HBI-C consists of a block body with a screwed-in connector on both sides. The spindle has an anti-blow-out design and is assembled from the outside. Due to the screwing, the seal can easily be changed. The use of an actuator is possible with an extension set. This possibility is to be announced with your order (additional charge).

#### application area

For non-aggressive fluids and gases. Furthermore, the resistiveness against the flow medium generally has to be given.

**Allowed operating temperature:** -10 °C up to +90 °C  
Differing temperatures on request.

Bill of materials			
Pos.	name	material	Wnr./DIN
10	body	11SMn30	1.0715
20	connector	11SMn30	1.0715
30	ball	11SMn30	1.0715
40	seal	POM	
50	stop washer	steel	
60	spindel	11SMn30	1.0715
70	fitting	CuZn39Pb3	2.0401
80	o-ring	NBR	
90	hand-lever	Z410	
100	o-ring	NBR	
110	screw		DIN EN ISO 24017
120	washer		DIN EN ISO 7093
130	o-ring	NBR	
140	stopp pin		DIN EN ISO 8740



Depending on the design, not all positions are used with every nominal diameter. In special types, several parts may be made of different materials.

In case of very low working pressure, use the low-pressure type with modified seals.

If you have other demands, different from the here specified standard operational conditions, please feel free to request them separately.

The operating and maintenance manual and in particular the safety instructions have to be followed. They can be downloaded from [www.von-scheven.com](http://www.von-scheven.com), as well as certificates and approvals.

All dimensions in mm.

Technical changes reserved.